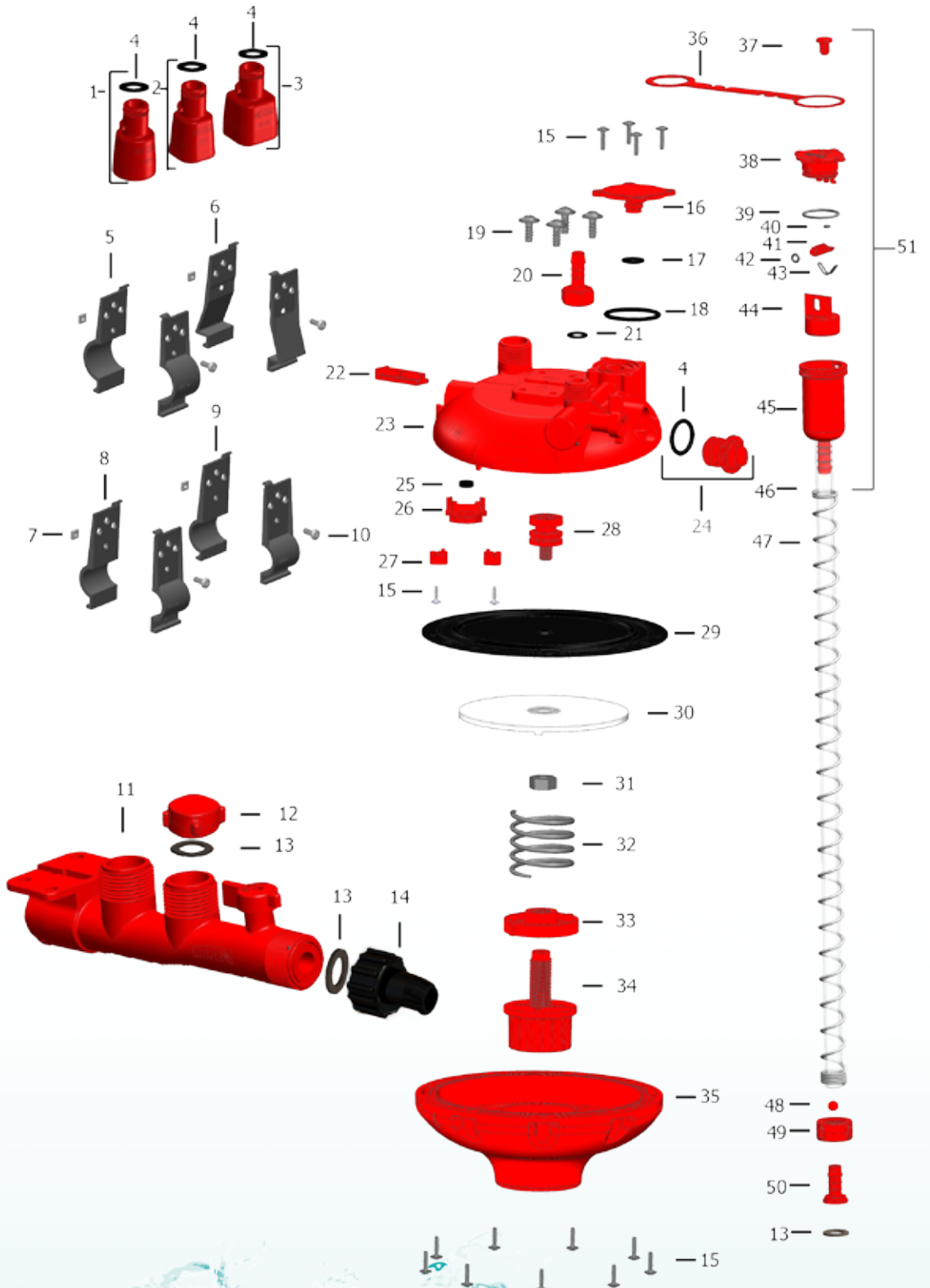


Pressure regulator and sets I-Flow - parts



Pressure regulator and sets I-Flow - parts

No. drawing	Article number	Description
1	12.01.10001	Reducer round 26.7 mm
2	12.01.10002	Reducer square 22 x 22 mm
3	12.01.10003	Reducer square 28 x 28 mm
4	12.01.10004	O-ring 16.9 x 2.7
5	12.01.10005	Fastening clamp reducer 33.7 mm
6	12.01.10006	Fastening clamp reducer Aluminium profile
7	12.01.10007	Square nut
8	12.01.10008	Fastening clamp reducer 25.4 mm
9	12.01.10009	Fastening clamp reducer 26.7 mm
10	12.01.00010	Screw, raised head
11	12.01.10011	End piece with valve
12	12.01.10012	Cap 3/4"
13	12.01.00013	Washer G 3/4"
14	12.01.00014	Tube connector 3/4" female thread x 3/4" connection
15	12.01.10015	Screw
16	12.01.10016	Cover
17	12.01.10017	O-ring 9.0 x 2.0 mm
18	12.01.10018	O-ring 28.5 x 2.62 mm
19	12.01.10019	Screw
20	12.01.10020	Tube connector 1/2"
21	12.01.00021	Washer 1/2" 11 x 18 x 1.5 mm
22	12.01.10022	Groove cover
23	12.01.10023	Top shell
24	12.01.10024	Plug with o-ring
25	12.01.10025	Valve washer
26	12.01.10026	Valve lever
27	12.01.10027	Valve lever bracket
28	12.01.10028	Lever operator
29	12.01.10029	Diaphragm
30	12.01.10030	Backing plate
31	12.01.10031	Nut G 18 inch
32	12.01.10032	Pressure spring
33	12.01.10033	Adjustment nut
34	12.01.10034	Adjustment knob
35	12.01.10035	Bottom shell
36	12.01.10036	Hanging strap
37	12.01.10037	Breather protection cap
38	12.01.10038	Breather cover
39	12.01.10039	O-ring 29.1 x 2.55 mm
40	12.01.10040	Breather valve washer
41	12.01.10041	Venting lever
42	12.01.10042	O-ring 4,6 x 2,4
43	12.01.10043	Bend O-ring
44	12.01.10044	Float
45	12.01.10045	Breather house
46	12.01.10046	Breather tube 60 cm
47	12.01.10047	Breather pressure spring
48	12.01.10048	Ball
49	12.01.10049	Union
50	12.01.10050	Tule
51	12.01.10051	Breather

1

2

3

4

5

6

7

8

9